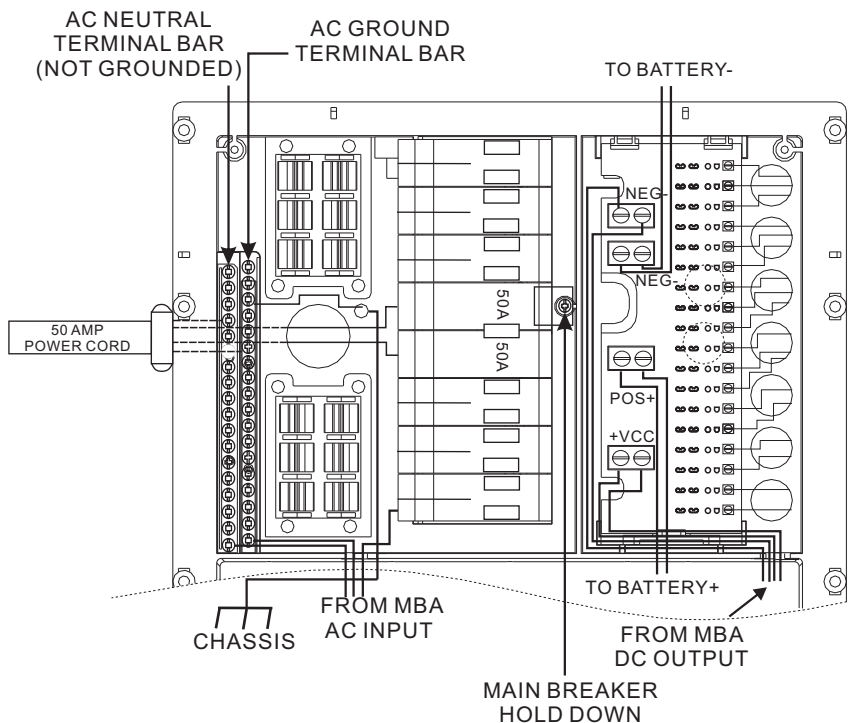




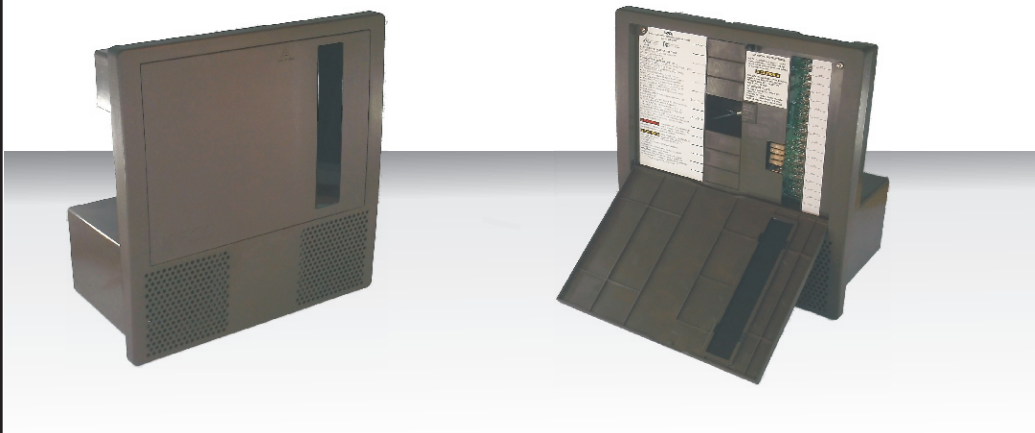
OEM Installation Manual
For use with WFCO ULTRA III Power Center
WF-9900 Series
(model number located on the door assembly label)

THE WIRING DIAGRAM



INSTALLATION INSTRUCTIONS

4



Distributed in the U.S.A. and Canada by
ARTERRA Distribution
Warranty Service (877) 294-8997
Fax (574) 294-8698
www.wfcoelectronics.com

OEM Installation of the WFCO WF-9900 Series Power Center

Select a mounting location near the shore power and battery (batteries) and cut a rough opening 1/8" wider than the box to allow the power center to slide in easily. Mount in an area where the owner is unlikely to store items, as this could reduce clearance requirements, obstruct ventilation openings and affect the performance of the converter. Select a mounting location that is appropriate to prevent excessive heat, water, moisture, dust and dirt entering the unit installed. All installations, should be tested for overall performance.

⚠ WARNING ⚠

This unit employs components that tend to produce arcs or sparks. To prevent fire or explosion, do not install in compartments containing batteries or flammable materials (LP gas).

⚠ CAUTION ⚠

For continued protection against risk of fire, or electric shock replace only with same type and ratings of fuse.

During the manufacturing process, be sure that all converter openings are protected from debris falling into the unit as this could cause the components to short out. (This is a non-warranty item.)

NOTE: If the reverse battery protection fuses are blown during installation, be sure that the battery has been connected properly, then replace the fuses with ATC "Littelfuse" Type 257 with the same rating as the original.

This product is not ignition protected and should not be installed in an LP compartment.

For proper wire sizes and torque requirements, refer to the label on the back of the door assembly.



INSTALLATION INSTRUCTIONS

2



INSTALLATION INSTRUCTIONS

3

AC Circuit Breakers (120/240) UL Listed

Max. Main Circuit Breaker Size: 50 Amp two pole or Equivalent. **Note:** Use only 2-pole circuit breakers for Main Circuit breaker.

Manufacturer:	Model/Cat. No./Type:
EATON	Type BR
ITE/Siemens	Type QP or QT
Square D	Type HOM
Murray	Type MH or MP

Max. Branch Circuit Breaker Size: 20 Amp or 20 Amp Two Pole

Manufacturer:	Model/Cat. No./Type:
EATON	Type BRD
ITE/Siemens	Type QP or QT
Square D	Type HOMT
Murray	Type MHT or MPT

A replacement or additional circuit breaker shall be of the same manufacturer, type designation, and equal or greater interrupting rating.

For Breaker tightening torque ratings, refer to Circuit breaker.

Neutral and Ground wire size refer to the label on the door assembly.

Breaker Filler Plates:

Manufacturer:	Model/Cat. No./Type:
WFCO	FP-01 or FP-01B